



## GIANT SERIES

With simple design, GIANT looks very modern. With delicate structure of radiator, GIANT are more powerful in heat sinking and can reach IP66. Multiple choose for installation, makes it more easy for different poles. Tool-free design makes it more convenient for install and maintenance. Moreover, GIANT have large wattage options from 100W to 1000W with three sizes, which makes it more applicable for different places.

### Key Advantage:

- ◇ Symmetrical and asymmetrical optics for highway, seaport, airport, train station, stadium
- ◇ Excellent heat dissipation management make sure long lifespan
- ◇ LED modular engine and easy for replacement and maintenance
- ◇ Weight control and make sure it is safe and pass 3G vibration
- ◇ IP66 and IK09
- ◇ DMX control available

### Application:

- ◇ Train Station
- ◇ Road and street lighting
- ◇ Highway, Airport, Seaport
- ◇ Park & Stadium
- ◇ Smart city option



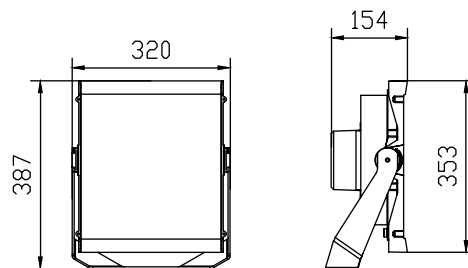
## Product features

### PARAMETER

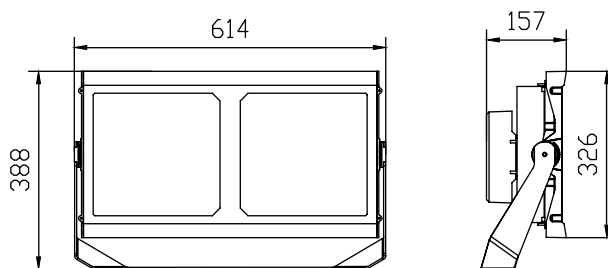
### TECHNICAL DATA

Type	GIANT SERIES
Lifetime	Up to 100,000hrs LM70,Ta 25°C
Color temperature	4000K as standard. Optional 3000K, 4000K & 5000K & 6500K. Amber LED available
Color stability	3 or 5 MacAdam steps for all standard LED colors
Color Rendering Index	>70 or >80 (neutral white and cool white)
LENS TYPES	Symmetry:10°/25°/40°
Power	from 100W up to 1000W
Luminaire efficiency	120-135lm/W
Operation Voltage	AC 90-305V or AC 220-240V
Frequency	50/60Hz
Body Parts Material	Die cast aluminum body+Extrusion Modular
OPTIC	PC(HOSCA OPTICS) PMMA(LEDIL and VS)
SCREEN	Flat tempered glass 5mm thickness
Control Dimming	0-10V(standard)/Timing,PWM,DALI(optional)
Electrical class	class I & class II
Operating temperature range	-35°C < Ta ≤ 50°C
IP rating	IP66
IK rating	IK09
Certifications	CE CB ENEC ETL DLC FC
GASKET	Silicone

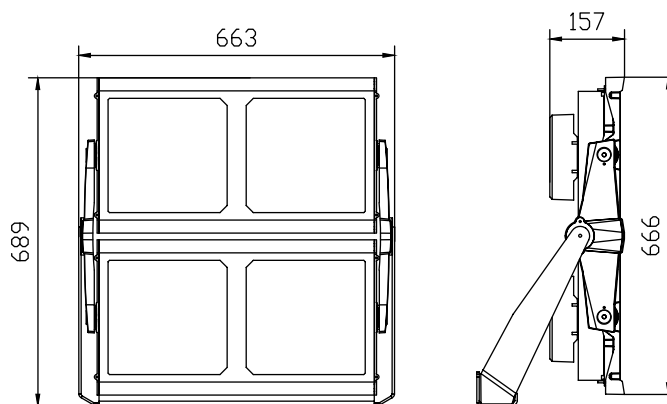
## Product Dimension



HTYGD-1000S

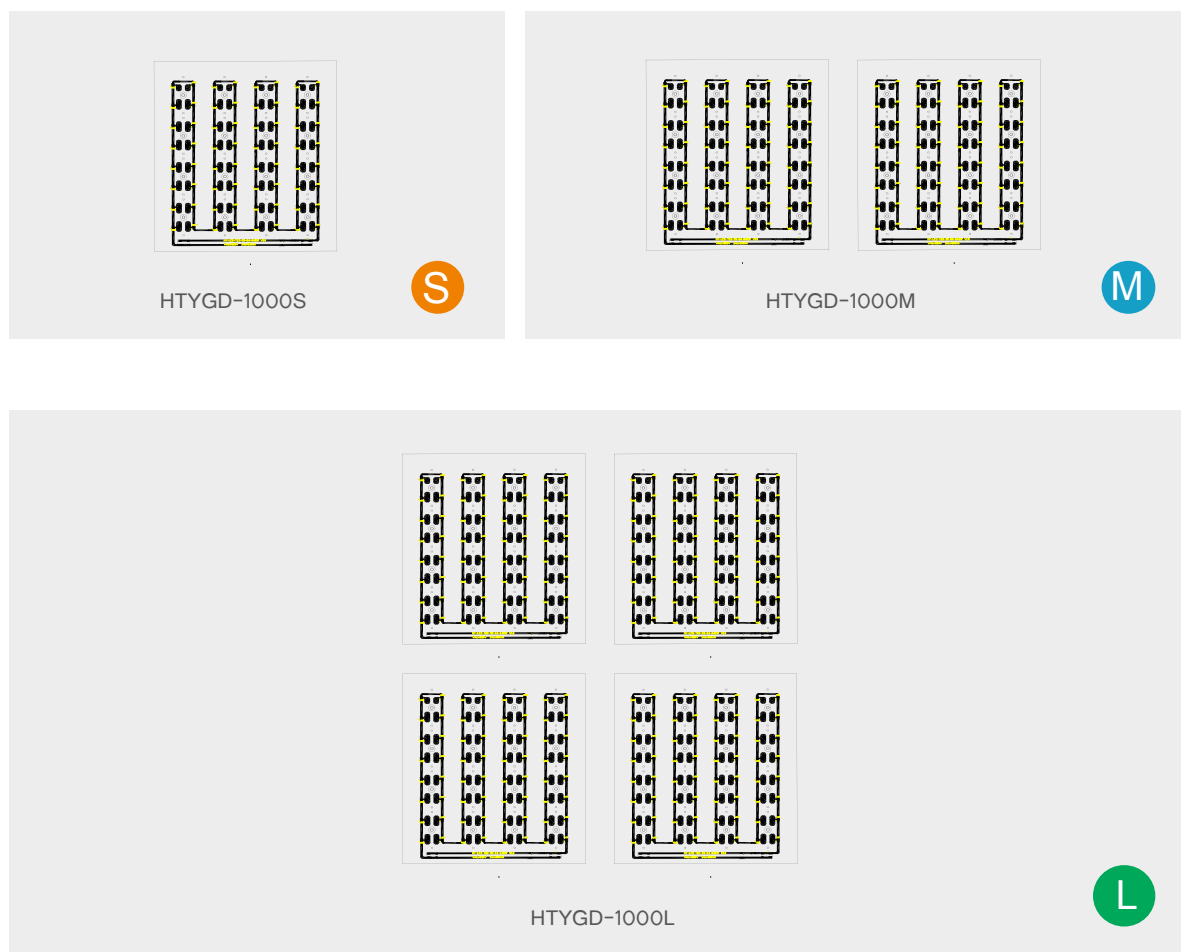


HTYGD-1000M



HTYGD-1000L

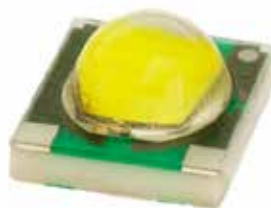
## ECO SERIES



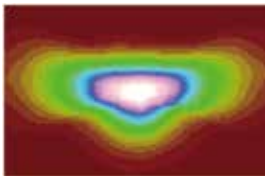
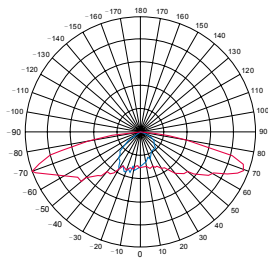
	LEDs	POWER (W) MIN/MAX	CREE CPG3		L90B10 at 25°C IESNA TM-21-11	L70 at 25°C IESNA TM-21-11
			CCT(3000K)	CCT(4000K)		
S	32	100	13000	13500	> 100000hrs	> 100000hrs
	64	200	26000	27000	> 100000hrs	> 100000hrs
M	96	400	52000	54000	> 100000hrs	> 100000hrs
	128	600	78000	81000	> 100000hrs	> 100000hrs
L	192	800	104000	108000	> 100000hrs	> 100000hrs
	256	1000	130000	135000	> 100000hrs	> 100000hrs

## Cree® XLamp® XP-G LEDs

The XLamp® XP-G LED delivers unprecedented levels of light output and efficacy for a single die LED.

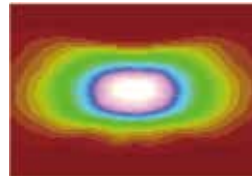
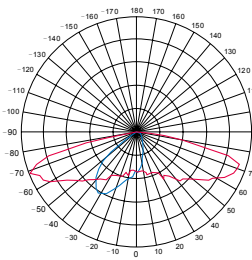


TYPE 1-M



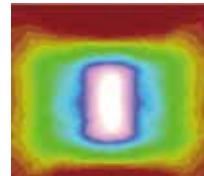
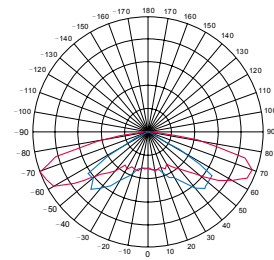
Potential application areas: footpaths, cycle paths, illuminated jogging trails

TYPE 2-M A



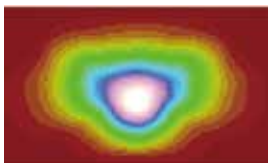
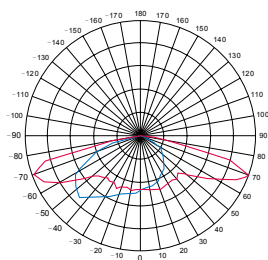
Potential application areas: streets, car parks, high way, fast road

TYPE 2-M B



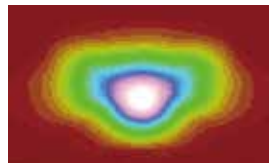
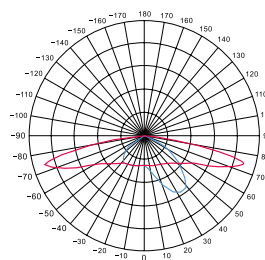
Potential application areas: streets, car parks, Luminous intensity G6

TYPE 3-M

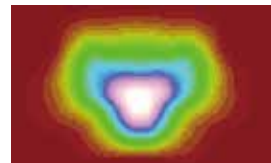
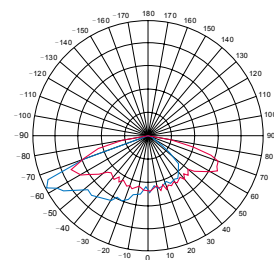


Potential application areas: wide streets, car parks, high way

TYPE 3-L

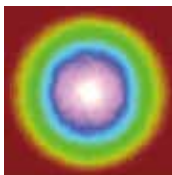
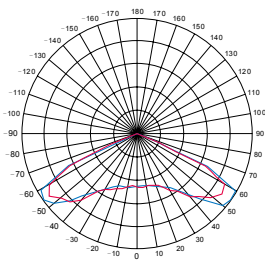


TYPE 4-S



Potential application areas: wide streets, car parks, high way, fast roads

TYPE 5-S



Potential application areas: car parks, airport



## VERSION

## RECOMMENDED MOUNTING HEIGHT (METERS)

HTYGD-1000S	10-20M
HTYGD-1000M	20-40M
HTYGD-1000L	40-50M





**ZHEJIANG HONG YUAN LAMPS CO.,LTD.**  
**NINGBO HOSCA LIGHTING TECHNOLOGY CO.,LTD**

Tel: 0086-574-62571211 / 0086-574-62571212

Fax: 0086-574-62571213

E-mail: [info@hoscalighting.com](mailto:info@hoscalighting.com)

[www.hoscalighting.com](http://www.hoscalighting.com)